

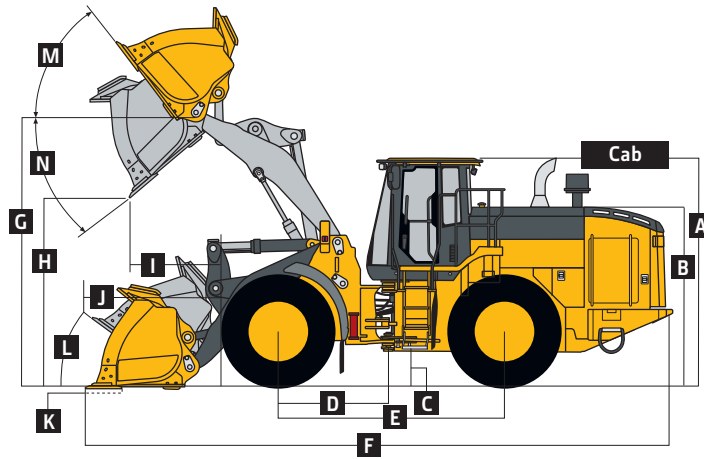


Hydraulic System/Steering (continued) 824K-II Z-BAR / HIGH-LIFT

Steering (conforms to ISO 5010)

Type	Power, fully hydraulic	
Articulation Angle	80-deg. arc (40 deg. each direction)	
Turning Radius (measured to centerline of outside tire)	5.92 m (19 ft. 5 in.)	
Hydraulic Cycle Times	<i>Z-Bar</i>	<i>High-Lift</i>
Raise	5.9 sec.	6.0 sec.
Dump	1.3 sec.	1.3 sec.
Lower (float down)	2.5 sec.	2.6 sec.
Total	9.7 sec.	9.9 sec.

Dimensions and Specifications with Pin-On Bucket



824K-II Z-BAR AND HIGH-LIFT LOADERS WITH PIN-ON BUCKET

	Z-Bar	Z-Bar	Z-Bar	Z-Bar	Z-Bar	Z-Bar	Z-Bar	Z-Bar	High-Lift	High-Lift
Dimensions with Bucket	4.6-m ³ (6.0 cu. yd.) general-purpose			4.8-m ³ (6.25 cu. yd.) general-purpose enhanced production			5.2-m ³ (6.75 cu. yd.) material-handling enhanced production		4.6-m ³ (6.0 cu. yd.) general-purpose	
Cutting Edge Type	<i>bolt-on-edge</i>	<i>teeth and segments</i>	<i>JAGZ™</i>	<i>bolt-on-edge</i>	<i>teeth and segments</i>	<i>JAGZ</i>	<i>bolt-on-edge</i>	<i>JAGZ</i>	<i>bolt-on-edge</i>	<i>teeth and segments</i>
A Height to Top of Cab	3.55 m (11 ft. 8 in.)	3.55 m (11 ft. 8 in.)	3.55 m (11 ft. 8 in.)	3.55 m (11 ft. 8 in.)	3.55 m (11 ft. 8 in.)	3.55 m (11 ft. 8 in.)	3.55 m (11 ft. 8 in.)	3.55 m (11 ft. 8 in.)	3.55 m (11 ft. 8 in.)	3.55 m (11 ft. 8 in.)
B Hood Height	2.70 m (8 ft. 10 in.)	2.70 m (8 ft. 10 in.)	2.70 m (8 ft. 10 in.)	2.70 m (8 ft. 10 in.)	2.70 m (8 ft. 10 in.)	2.70 m (8 ft. 10 in.)	2.70 m (8 ft. 10 in.)	2.70 m (8 ft. 10 in.)	2.70 m (8 ft. 10 in.)	2.70 m (8 ft. 10 in.)
C Ground Clearance	462 mm (18.2 in.)	462 mm (18.2 in.)	462 mm (18.2 in.)	462 mm (18.2 in.)	462 mm (18.2 in.)	462 mm (18.2 in.)	462 mm (18.2 in.)	462 mm (18.2 in.)	462 mm (18.2 in.)	462 mm (18.2 in.)
D Length from Centerline to Front Axle	1.70 m (5 ft. 7 in.)	1.70 m (5 ft. 7 in.)	1.70 m (5 ft. 7 in.)	1.70 m (5 ft. 7 in.)	1.70 m (5 ft. 7 in.)	1.70 m (5 ft. 7 in.)	1.70 m (5 ft. 7 in.)	1.70 m (5 ft. 7 in.)	1.70 m (5 ft. 7 in.)	1.70 m (5 ft. 7 in.)
E Wheelbase	3.46 m (11 ft. 4 in.)	3.46 m (11 ft. 4 in.)	3.46 m (11 ft. 4 in.)	3.46 m (11 ft. 4 in.)	3.46 m (11 ft. 4 in.)	3.46 m (11 ft. 4 in.)	3.46 m (11 ft. 4 in.)	3.46 m (11 ft. 4 in.)	3.46 m (11 ft. 4 in.)	3.46 m (11 ft. 4 in.)
F Overall Length, Bucket on Ground	9.28 m (30 ft. 5 in.)	9.48 m (31 ft. 1 in.)	9.28 m (30 ft. 5 in.)	9.38 m (30 ft. 9 in.)	9.59 m (31 ft. 6 in.)	9.37 m (30 ft. 9 in.)	9.44 m (31 ft. 0 in.)	9.44 m (31 ft. 0 in.)	9.77 m (32 ft. 1 in.)	9.95 m (32 ft. 8 in.)
G Height to Hinge Pin, Fully Raised	4.48 m (14 ft. 9 in.)	4.48 m (14 ft. 9 in.)	4.48 m (14 ft. 9 in.)	4.48 m (14 ft. 9 in.)	4.48 m (14 ft. 9 in.)	4.48 m (14 ft. 9 in.)	4.48 m (14 ft. 9 in.)	4.48 m (14 ft. 9 in.)	4.85 m (15 ft. 11 in.)	4.85 m (15 ft. 11 in.)
H Dump Clearance, 45 deg., Full Height	3.19 m (10 ft. 6 in.)	3.06 m (10 ft. 0 in.)	3.20 m (10 ft. 6 in.)	3.12 m (10 ft. 3 in.)	2.97 m (9 ft. 9 in.)	3.12 m (10 ft. 3 in.)	3.07 m (10 ft. 1 in.)	3.08 m (10 ft. 1 in.)	3.63 m (11 ft. 11 in.)	3.52 m (11 ft. 7 in.)
I Reach, 45-deg. Dump, Full Height	1.28 m (4 ft. 2 in.)	1.42 m (4 ft. 8 in.)	1.28 m (4 ft. 2 in.)	1.28 m (4 ft. 4 in.)	1.42 m (4 ft. 10 in.)	1.28 m (4 ft. 4 in.)	1.38 m (4 ft. 6 in.)	1.38 m (4 ft. 6 in.)	1.63 m (5 ft. 4 in.)	1.77 m (5 ft. 10 in.)
J Reach, 45-deg. Dump, 2.13-m (7 ft. 0 in.) Clearance	2.05 m (6 ft. 9 in.)	2.12 m (6 ft. 11 in.)	2.05 m (6 ft. 9 in.)	2.08 m (6 ft. 10 in.)	2.15 m (7 ft. 1 in.)	2.09 m (6 ft. 10 in.)	2.10 m (6 ft. 11 in.)	2.10 m (6 ft. 11 in.)	2.50 m (8 ft. 2 in.)	2.58 m (8 ft. 5 in.)
K Maximum Digging Depth	117 mm (4.6 in.)	130 mm (5.1 in.)	114 mm (4.5 in.)	125 mm (4.9 in.)	145 mm (5.7 in.)	121 mm (4.8 in.)	130 mm (5.1 in.)	127 mm (5.0 in.)	196 mm (7.7 in.)	196 mm (7.7 in.)
L Maximum Rollback at Ground Level	44.3 deg.	44.3 deg.	44.3 deg.	44.3 deg.	44.3 deg.	44.3 deg.	44.3 deg.	44.3 deg.	45.5 deg.	45.5 deg.
M Maximum Rollback, Boom Fully Raised	52 deg.	52 deg.	52 deg.	52 deg.	52 deg.	52 deg.	52 deg.	52 deg.	53 deg.	53 deg.
N Maximum Bucket Dump Angle, Fully Raised	44.1 deg.	44.1 deg.	44.1 deg.	44.6 deg.	44.6 deg.	44.6 deg.	44.6 deg.	44.6 deg.	39.8 deg.	39.8 deg.
Loader Clearance Circle, Bucket Carry Position	14.14 m (46 ft. 5 in.)	14.26 m (46 ft. 9 in.)	14.14 m (46 ft. 5 in.)	14.20 m (46 ft. 7 in.)	14.34 m (47 ft. 1 in.)	14.20 m (46 ft. 7 in.)	14.12 m (46 ft. 9 in.)	14.12 m (46 ft. 9 in.)	14.68 m (48 ft. 2 in.)	14.81 m (48 ft. 7 in.)